

# State of Wyoming Corner Record

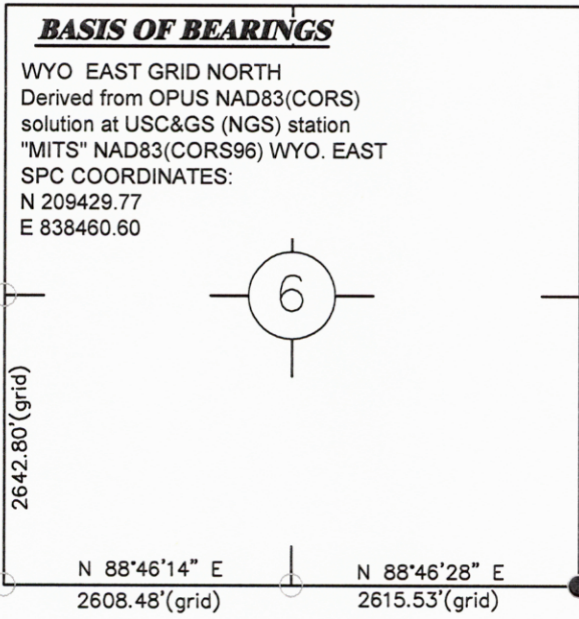
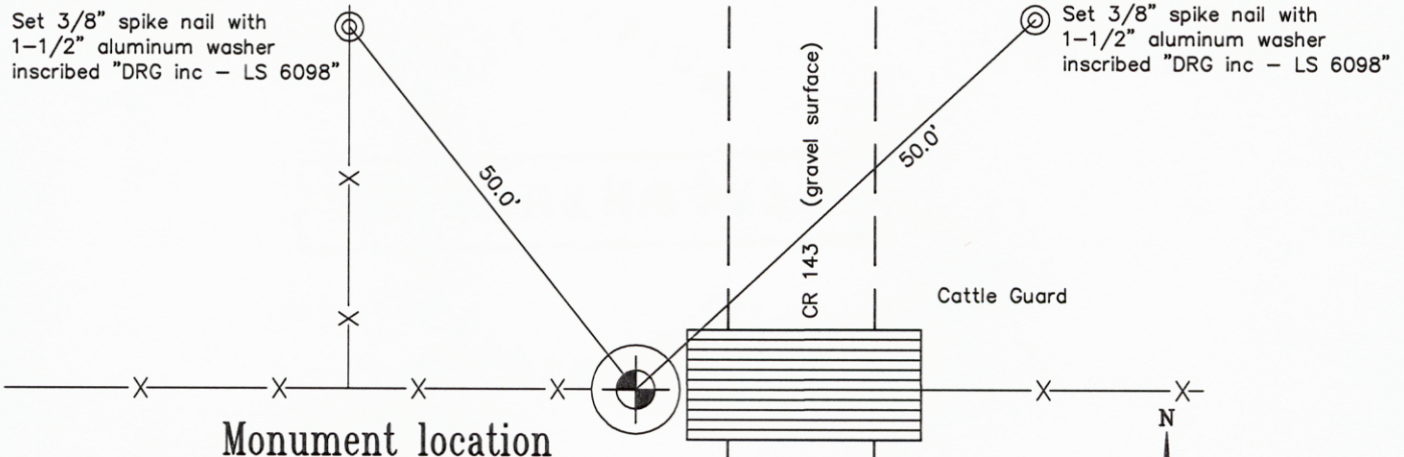
(In compliance with the *CORNER PERPETUATION AND FILING ACT*, Wyoming Statutes, 1997 Section 33-29-140 et. seq., and the Rules and Regulations of the Board of Professional Engineers and Professional Land Surveyors)

Reverse side of this form may be used if more space is needed.

Record of original survey and citation of source of historical information (if corner is lost or obliterated). Description of corner monumentation evidence found and/or monument and accessories established to perpetuate the location of this corner. Sketch of relative location of monument, accessories, and reference points with course and distance to adjacent corner(s) (if determined in this survey). Method and rationale for reestablishment of lost or obliterated corner.

U.S.G.L.O. 1911 Dependent ReSurvey Record: Set a iron post, 3 ft. long, 2 ins. diam., 2-1/2 ft. in the ground, for cor. of Secs. 5, 6, 7 and 8, and mark on the brass cap on the post T12N S6 in N.W., R63W S5 in N.E., s8 in S.E. and S7 in S.W. quadrants.

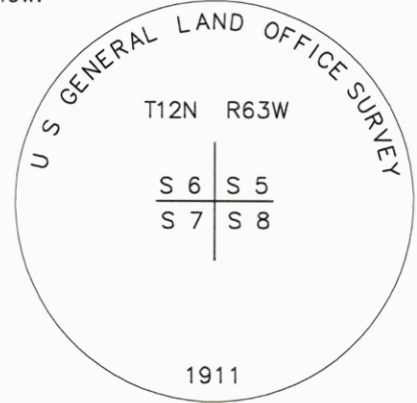
Found a USGLO standard 2-1/2" Brass Cap on a 2" iron pipe 2.0' below ground in a 18" diameter steel pipe monument well and inscribed as shown below.



N

WYO. SPC EAST GRID NORTH

Found a USGLO standard 2-1/2" Brass Cap on a 2" iron pipe 2.0' below ground in a 18" diameter steel pipe monument well and inscribed as shown below.

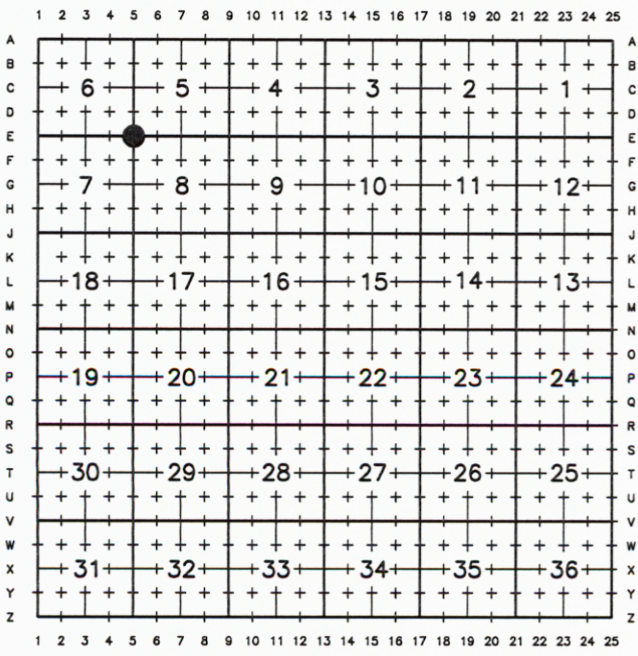


## Monument Inscription

Date of Field Work: 6/12/11

Office Reference: 18676

## Cross Index Plat

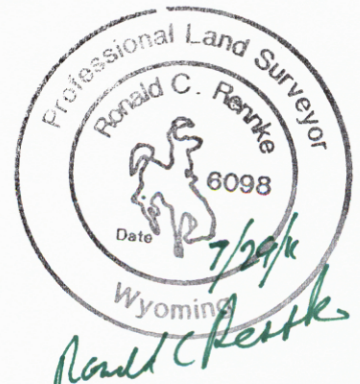


Firm/Agency, Address

RONALD C. RENNKE  
D. R. GRIFFIN & ASSOCIATES  
1414 ELK STREET  
ROCK SPRINGS, WYOMING 82901  
Telephone Number: (307) 362-5028

This corner record was prepared by me or under my direction and supervision.

*SEAL & SIGNATURE*



RECORDED 8/09/2011 AT 10:08 AM REC# 573725 BK# 2231 PG# 409  
DEBRA K. LATHROP, CLERK OF LARAMIE COUNTY, WY PAGE 1 OF 1

Corner Name Southeast Corner Section 6, T 12 N, R 63 W, 6th P.M.

Cross-Index No.: E-5

County: Laramie, Wyoming

SBRPEPLS/PLSW: March 1994; PLSW January 1998